



STEELTEK™
SUPREME

STEEL SIDING WITH KYNAR®



THE SIDING OTHER STEEL IS MEASURED BY



HIGHER EXPECTATIONS... EXTRAORDINARY RESULTS

Industry-leading technology and innovation. Craftsmanship unrivaled in quality and performance. Outstanding products. Impeccable service. The confidence and trust of every customer, every day.

For more than 55 years, Gentek Building Products has manufactured siding and accessories in beautiful styles and exquisite colors. With durable finishes that are easy to maintain. Backed by warranties that deliver lasting protection and excellent value. Giving you the expertise and personal touch – that make us truly a part of your home.

With special pride, we champion our “Custom-Crafted in the U.S.A.” steel siding production, fully supported by our longstanding commitment to excellence in materials testing, design, manufacturing and installation. When you choose SteelTek Supreme steel siding for your home, you can be assured of an ultra-premium finish that will stand the test of time.





Two of the world's best performing materials come together in SteelTek Supreme steel siding. This heavy-duty Galvalume® AZ-50 steel with Kynar® coating technology delivers on every promise for enduring beauty, impressive strength, uniform quality and a markedly refined appearance for your home.

A PREMIER HOME EXTERIOR

Distinguished for its superb durability and versatile design possibilities, metal is on the rise as a prime exterior material. Premium raw materials and cutting-edge technology merge with skilled craftsmanship and artistic vision to achieve the outstanding quality of our SteelTek Supreme steel siding. Featuring four profile designs, an inviting roughsawn texture and luxurious colors, SteelTek Supreme makes it easy to create custom elegance that's also exceptionally strong and virtually maintenance-free.

SUPERIOR BEAUTY, DURABILITY AND PROTECTION

SteelTek Supreme steel siding provides a powerful shield for your home. Pounding rain, severe wind, freezing temperatures and blistering heat are no match for the commanding strength of steel. Each Galvalume steel panel is virtually "weather-sealed" with a resilient Kynar finish, ensuring long-lasting beauty and protection.

HIGH-PERFORMANCE YIELD STRENGTH

Yield strength is the amount of stress a material can withstand and is measured in thousands of pounds of force per square inch (KSI). SteelTek Supreme's yeild strength has been tested and proven to perform with impressive results.

- **Yield Strength** is the force (tension, compression or shearing) that is applied to a material and results in some type of material deformity; the material does not fail and it may return to its normal shape when the force is removed. SteelTek Supreme YS is 35,000 pounds per square inch.



Impact Resistant Constructed of roll-formed 29 gauge Galvalume AZ-50 steel for superior resistance to hail damage and denting.



Built Weather-Tough Rugged steel construction is virtually impervious to outdoor elements. Unlike wood, compressed particleboard or fiber cement, it won't absorb moisture. Steel siding also resists warping, chalking, fading and brittleness in cold weather; independently tested to withstand intense winds.



Smooth, Straight Wall Lines Rigid steel panels deliver high dimensional stability and resist buckling and the wavy appearance that can result from expansion and contraction caused by extreme weather changes. The low thermal expansion of steel is less than 1/8" over a 12' panel for the anticipated temperature range.



Beautifully Uniform Finish Tight joints keep overlaps neat and flat; rigid steel helps conceal imperfections in the exterior's substructure.



Upscale Appearance Deep 1/2" panel projection creates greater dimension and style with bold edges and dramatic shadow lines. The resilient finish resists dirt and dust buildup, staining and mildew.



Carefree Maintenance No need for time-consuming painting or scraping. Just a simple rinse with a garden hose will remove most airborne dust and dirt to restore the like-new beauty.



Recyclable! Steel siding is 100% recyclable, requires no additional painting or caulking and does not produce silica dust during installation.



Simple to Install Installs easily; unlike fiber cement, steel siding installation does not recommend a dust respirator or involve hazards from silica dust.

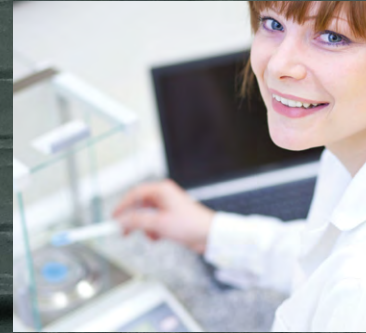


Class A Fire Rating Unlike many other siding materials, steel is a non-combustible product, meeting even the most stringent building codes.



Insect Resistant Resists damage from wood-eating insects, such as termites.





RESILIENT KYNAR COATING SYSTEM

The power of Kynar stands clear: no other steel coating system resists the challenges of nature and time like those based on Kynar resins. Protecting and preserving the steel core, the resilient resin provides a luxurious, low-gloss color that resists scratches, fading, chalking, pitting, chipping and more. SteelTek Supreme's proprietary coating also is specially formulated for enhanced texture.

- Highly durable and weatherable
- Polymer pigments keep colors true and help prevent fading
- Beautiful, strong, low-gloss finish with superior scratch resistance
- High-performance coating protects panels from staining and helps prevent dirt and other airborne pollutants from adhering to the siding
- Resists mildew and fungus growth – Kynar does not have UV-sensitive organic material needed for mildew growth





FOR YOUR CAREFUL CONSIDERATION

When selecting the best exterior cladding for your home, it's important to understand the facts. Fiber cement often gains attention for its appearance of freshly painted wood, but when you compare it side by side with steel siding, you'll see why SteelTek Supreme is an excellent choice.

	SteelTek Supreme Steel Siding	Fiber Cement ¹
Beauty	Heavy-duty steel panel with Kynar coating – never needs to be painted.	Made of cellulose and cement; if not prefinished, it must be primed, painted and caulked.
Maintenance	Simply rinse with a garden hose to remove most airborne dust and dirt.	May require caulking and re-caulking to seal seams; may also require repainting to maintain appearance.
Durability	Highly durable Kynar formula resists staining, dirt and airborne pollutants; stands up strong to almost any weather. Resists impact and hail damage.	Absorptive – must be handled properly from the very start to avoid cracks and chips during shipping, delivery and installation; can be susceptible to delaminating in freeze/thaw conditions.
Installation Ease	Easy to install; creates a neat, uniform finish.	Labor intensive; precise cutting is required for a professional finish. Installers are advised to wear a dust mask or respirator to avoid inhaling silica dust.
Resists Mold or Mildew	Won't absorb moisture; Kynar coating does not have UV-sensitive organic material needed for mildew growth.	Fiber cement is absorptive, creating the potential for moisture penetration that can lead to rot, mold and/or poor indoor air quality.
Recyclable	Steel is 100% recyclable.	Many fiber cement manufacturers send production scrap to landfills.
Warranty	SteelTek Supreme steel siding is backed by a lifetime limited, non-prorated, transferable warranty with 50 year hail and 35 year chalk and color change protection. See printed warranty for complete details.*	Warranty coverage for 30 years; 15 year limited finish warranty on prefinished products. Warranties are prorated after the first year. No coverage for hail, mold or mildew.

Powerful Galvalume AZ-50 Steel At the core of SteelTek Supreme's impressive performance is Galvalume AZ-50 steel. Galvalume features a specially formulated 55% aluminum-zinc alloy coating that protects the steel from the elements and provides superior corrosion resistance compared to conventional galvanized steel.

THE DANGERS OF SILICA DUST

Silica-based fiber cement contains respirable crystalline silica, which is considered by NIOSH (National Institute for Occupational Safety and Health) to be a cause of cancer from some occupational sources. Breathing excessive amounts of respirable silica dust can cause a disabling and potentially fatal lung disease, such as silicosis.² During installation, a dust-collection system attached to a mechanical saw or high-speed cutting tool is recommended, or wear a NIOSH-approved dust mask or respirator. Recommended cleanup includes a vacuum and filter appropriate for capturing respirable silica dust or wet cleanup method to further prevent exposure. Do not dry sweep.



YOUR HOME WITH A STYLE ALL ITS OWN

With an artful balance of form and function, SteelTek Supreme presents four distinctive profiles: Double 4" Clapboard, Double 5" Clapboard, 8" Clapboard and 12" Vertical Board & Batten. The high-style warmth of each panel is further enhanced with a natural-looking roughsawn texture and colors that mimic nature. Matching and complementing trim and accessories complete the design, inspiring a perfectly pulled-together finished look that truly stands apart.



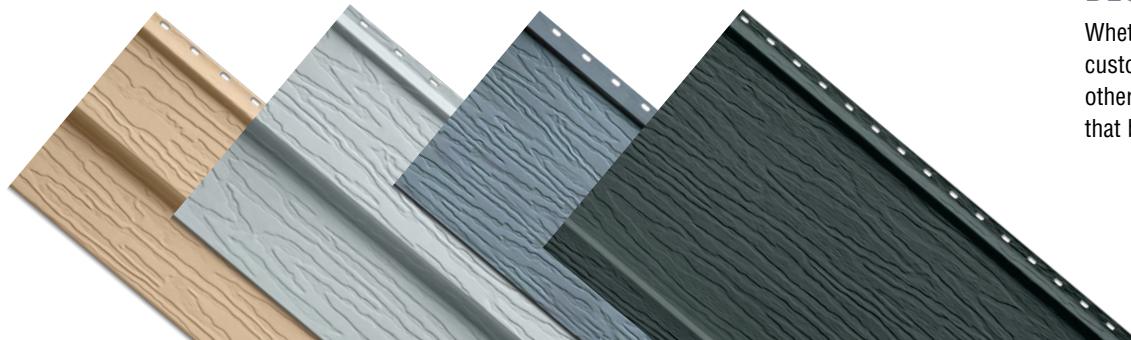
House shown in Double 4" Clapboard.

Double 4" Clapboard
Roughsawn Texture

Double 5" Clapboard
Roughsawn Texture

8" Clapboard
Roughsawn Texture

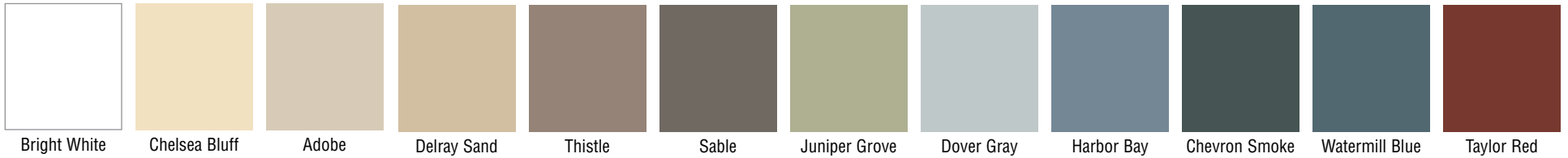
12" Vertical Board & Batten
Roughsawn Texture



DESIGNER TRIM AND ACCESSORIES

Whether they blend in or stand out, decorative details will infuse your home with custom style. Choose from our versatile selection of accessories, trim coil and other engineered metal components in matching colors to achieve a striking finish that beautifully reflects your personal taste.

Color Palette



Our masterfully crafted 12" Vertical Board & Batten profile speaks to a variety of today's architecture, adding greater dimension and visual appeal.

DID YOU KNOW...

SteelTek Supreme's Kynar coating system has a performance additive that results in improved scuff resistance over polyvinyl chloride (PVC) finishes.

Steel siding can now be cut with an approved saw blade, making installation faster and easier.

Because steel siding is "hung," it floats better on the exterior for a smoother appearance; fiber cement installs tightly to the exterior wall and thus can show unevenness or imperfections in the substructure.

COLOR MATCHING MADE SIMPLE



No need to settle for siding and trim that "almost match." Our Color Clear Through® collection of customer-preferred hues helps ensure a beautiful color match with other Gentek siding, trim and accessory products.



Design inspiration starts here! At Gentek, we offer everything you need to achieve your ideal finished look. Visit gentekusa.renovorks.com to get started with this exciting design tool! And check out gentekinc.com/blog/ for creative inspiration, renovation tips and more.

BETTER PRODUCTS FOR A BRIGHTER FUTURE

You may not realize it, but building green begins long before the materials are ready for installation on your home. It begins with a strong commitment to “source reduction” by the manufacturer. This means that all aspects of production are designed to help reduce the volume and environmental impact of waste, while also ensuring thoughtful material use to create products with a longer service life. At Gentek, we strongly encourage best practices for environmental stewardship and proudly offer a wide variety of recyclable steel, aluminum and vinyl products.

Built to shield your home from even the most punishing weather, Gentek steel siding also promotes energy conservation by creating a tight building envelope for more efficient heating and cooling performance year-round.³ In terms of strength and stability, steel offers many advantages for residential home building – and is the most recycled material on the planet!⁴ The uncompromising endurance of this heavy-gauge siding promises exceptional beauty and lasting protection for your home.



DETAILS THAT MAKE THE DIFFERENCE

Accent the architecture of your home with coordinating soffit, fascia and trim. Masterfully crafted exterior accessories will give your home a distinctive touch of personality and style.



BUILT FOR YOU... GENTEK WINDOWS AND PATIO DOORS

For your total home solution, choose Gentek replacement windows and patio doors. Advanced technology merged with enduring beauty, superior energy savings, easy upkeep and excellent value make it a great choice for today's homes. See your Gentek Sales Representative for details.

A WORD ABOUT QUALITY

Gentek delivers the confidence and value only a true leader can provide. We proudly stand behind our products with the full faith of our more than 55 years of manufacturing expertise and some of the strongest warranties in the industry. Our voluntary participation in rigorous quality certifications and independent testing are further assurance you have made an excellent selection for your home.

A LIFETIME OF PROTECTION

SteelTek Supreme steel siding is backed by a lifetime limited, non-prorated, transferable warranty with 50 year hail and 35 year chalk and color change protection. For complete warranty information, including limitations, please see the SteelTek Supreme steel siding warranty.*



3773 State Road, Cuyahoga Falls, Ohio 44223
www.gentekinc.com

Make us a part of your home.

*For copy of the written product warranty, please visit www.gentekinc.com/support/warranty/ or contact your Gentek Sales Representative. Limited warranty does not apply to damage caused by faulty or improper installation, or causes outside of Gentek's control.

¹www.vinylcladding.co.nz/wp-content/uploads/2023/10/Vinyl-Siding-and-Fibre-Cement-side-by-side-comparison.pdf (accessed 1/16/25).

²"Reducing Hazardous Dust Exposure When Cutting Fiber-Cement Siding," DHHS (NIOSH), Publication No. 2015-185, www.cdc.gov/niosh/docs/wp-solutions/2015-185/pdfs/2015-185.pdf?id=10.26616/NIOSH PUB2015185 (accessed 1/16/25).

³See your Gentek Sales Representative for additional information regarding any questions you might have, or any assertions herein, concerning energy efficiency or savings. Energy savings will vary.

⁴American Iron and Steel Institute, www.steel.org/wp-content/uploads/2021/11/AISI_FactSheet_SteelSustainability-11-3-21.pdf (accessed 1/16/25).

Colors may be slightly different from their appearance in this brochure. Make final color selections using actual product samples. Product specifications are subject to change without notice. Trademarks mentioned in this document are the property of Gentek Building Products, its affiliates or their respective owners.

